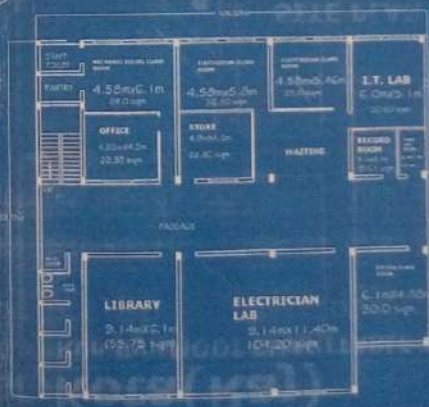


Building Plan of Modi Pvt. I T I at plot no.2 ,sector No.2 Swami Vivekanad Nagar, Kota(Raj)

Run By:-MODI CHARITABLE TRUST



| ROOM NAME | AREA (In sqm) | ROOM NAME | AREA (In sqm) |
|-------------------------------|--------------------------------|----------------------------|--------------------------------|
| 1. MECHANIC DIESEL | 9.14m x 12.42m = 113.61 sqm | 9. Office | 4.95m x 4.50m = 22.25 sqm |
| 2. Electrician Lab | 10.20m x 9.14m = 100.0 sqm | 10. Store Room | 4.95m x 4.50m = 22.25 sqm |
| 3. Fitter Lab | 11.39m x 9.14m = 104.20 sqm | 11. ELECTRICIAN CLASS ROOM | 4.58m x 5.46m = 25.0 sqm |
| 4. Class Room | 5.0m x 5.0m = 25.0 sqm | 12. ELECTRICIAN CLASS ROOM | 9.14m x 11.40m = 104.20 sqm |
| 5. STAFF Room | 6.11m x 4.11m = 25.0 sqm | 13. Work Shop | 6.8m x 5.1m = 30.6 sqm |
| 6. Principal Room | 8.43m x 2.97m = 26.9 sqm | 14. I.T. Lab | 3.10m x 3.10m = 9.61 sqm |
| 7. MECHANIC DIESEL CLASS ROOM | 4.58m x 6.10m = 28.0 sqm | 15. Record Room | 3.10m x 1.90m = 5.90 sqm |
| 8. Library | 9.14m x 1.1m = 10.0 sqm | 16. First Aid Room | 3.10m x 1.90m = 5.90 sqm |
| | | 17. Waiting Room | 6.10m x 4.88m = 29.8 sqm |
| | | 18. FITTER CLASS ROOM | 6.10m x 4.88m = 29.8 sqm |



PLOT AREA:-
29.57m x 30.01m
= 1133.53 sqm
Building area
= 601.53 sqm

CREATION

2nd FLOOR